



**Roca**

**vulcano**

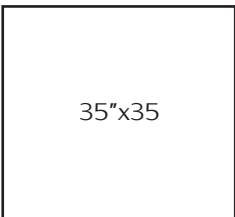
glazed & polished porcelain





Vulcano Cobre

Available Sizes

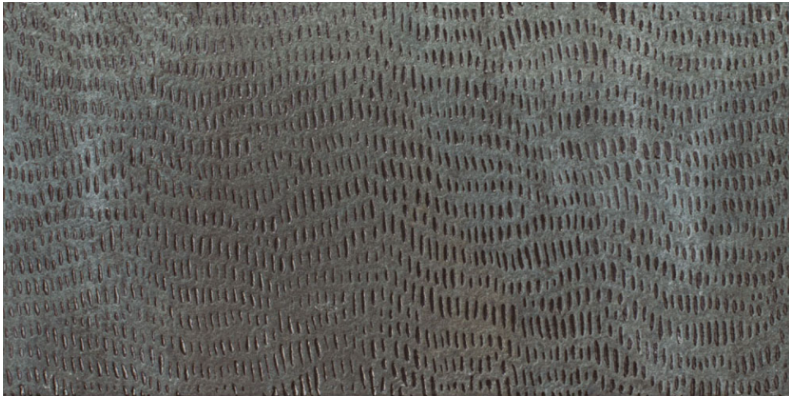


TECHNICAL INFORMATION

CHARACTERISTICS	STANDARD	Declared ASTM Matte	Declared ASTM Polished
Water Absorption	ISO-10545/3	<=0.5%	<=0.5%
Break Strength	ISO-10545/4	300 Lbs	335 Lbs
Scratch Hardness	EN-101	5	4
Chemical Resistance	ISO-10545/13	Unaffected	Unaffected
Frost Resistance	ISO-10545/12	Resistant	Resistant
Group	ISO-10545/7	2	2
Minimum Bond Strength (PSI)	C482	165	165
Dynamic Coefficient of Friction (DCOF)	A137.1	<0.40	<0.40
Shade and Texture Rating	CTDA	V3	V3
Facial Dimensions	ISO-10545/2	Pass	Pass
Range of Thickness	ISO-10545/2	Pass	Pass
Warpage	ISO-10545/2	Pass	Pass
Wedging	ISO-10545/2	Pass	Pass
PEI	C1027	2	2

PACKAGING INFORMATION

SIZE	SF PER CARTON	PC PER CARTON
35"x35"	17.22	2



Vulcano Carve

TECHNICAL INFORMATION

CHARACTERISTICS	STANDARD	Declared ASTM
Water Absorption	ISO-10545/3	<=0.5%
Break Strength	ISO-10545/4	335 Lbs
Scratch Hardness	EN-101	4
Chemical Resistance	ISO-10545/13	Unaffected
Frost Resistance	ISO-10545/12	Resistant
Group	ISO-10545/7	3
Dynamic Coefficient of Friction (DCOF)	A137.1	<=0.42
PEI	C1027	3
Shade and Texture Rating	CTDA	V3
Facial Dimensions	ISO-10545/2	Pass
Range of Thickness	ISO-10545/2	Pass
Warpage	ISO-10545/2	Pass
Wedging	ISO-10545/2	Pass

PACKAGING INFORMATION

SIZE	SF PER CARTON	PC PER CARTON
12"x24"	19.38	10

Available Sizes

12"x24" R