



**Roca**

# orion II

technical porcelain





Orion II Blanco



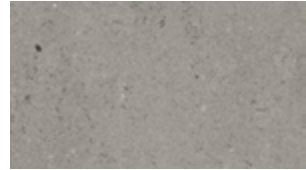
Orion II Perla



Orion II Crema



Orion II Beige



Orion II Gris

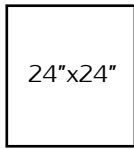
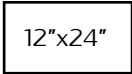


Orion II Antracita

TECHNICAL INFORMATION

| CHARACTERISTICS                        | STANDARD     | Declared ASTM Matte | Declared ASTM Polished |
|--|--------------|---------------------|------------------------|
| Water Absorption                       | ISO-10545/3  | <=0.1%              | <=0.1%                 |
| Break Strength                         | ISO-10545/4  | 630 Lbs             | 550 Lbs                |
| Scratch Hardness                       | EN-101       | 7                   | 5                      |
| Chemical Resistance                    | ISO-10545/13 | Unaffected          | Unaffected             |
| Frost Resistance                       | ISO-10545/12 | Resistant           | Resistant              |
| Group                                  | ISO-10545/7  | 4                   | 3                      |
| Minimum Bond Strength (PSI)            | C482         |                     |                        |
| Dynamic Coefficient of Friction (DCOF) | A137.1       | >0.4 2              | <=0.42                 |
| Shade and Texture Rating               | CTDA         | V3                  | V3                     |
| Facial Dimensions                      | ISO-10545/2  | Pass                | Pass                   |
| Range of Thickness                     | ISO-10545/2  | Pass                | Pass                   |
| Warpage                                | ISO-10545/2  | Pass                | Pass                   |
| Wedging                                | ISO-10545/2  | Pass                | Pass                   |
| PEI                                    | C1027        |                     |                        |

Available Sizes



PACKAGING INFORMATION

| SIZE    | SF PER CARTON | PC PER CARTON |
|---------|---------------|---------------|
| 12"x24" | 11.62         | 6             |
| 24"x24" | 11.62         | 3             |