



**Roca**

**Downtown**





# Downtown

Transform your space into a place of gathering, exchange and interaction with our Downtown series. This color body porcelain is available in multiple colors and formats that provide a clean and rigorous look.

## Color Body Porcelain

◇ 24"x48" R - 32"x32" R - 24"x24" R - 12"x24" R

Downtown Gray 24"x24" R & 12"x24" R





Downtown Gray 32"x32" R

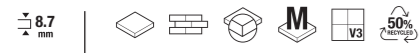


Downtown Marengo 32"x32" R

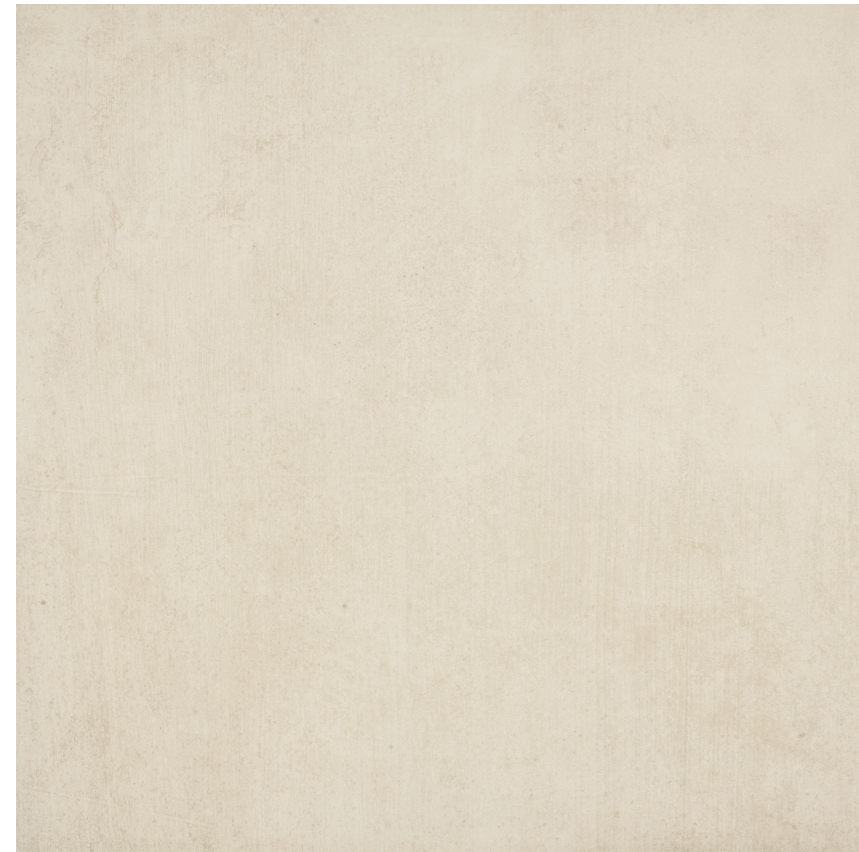


# Downtown

Color Body Porcelain



**24"x48" R** 60x120 cm | **32"x32" R** 80x80 cm | **24"x24" R** 60x60 cm | **12"x24" R** 30x60 cm



## Blanco



**24"x48" R Biosafe**  
FTRO54011



**32"x32" R**  
FJTT6AE011



**24"x24" R**  
FJTT660011



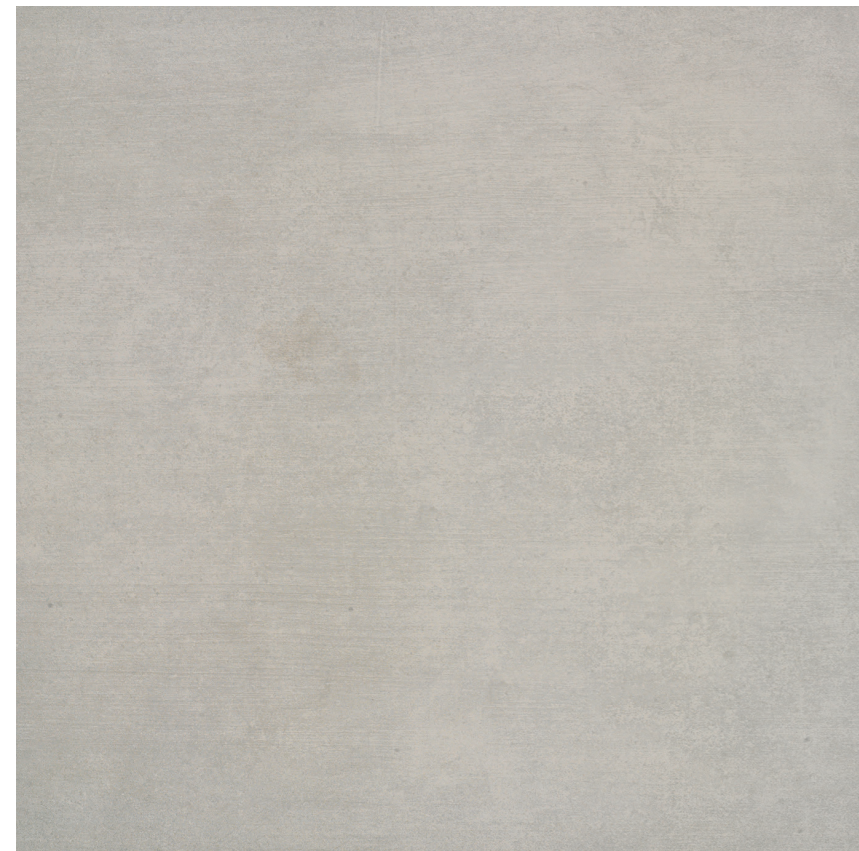
**12"x24" R**  
FJTT657011



**12"x12" Mosaic**  
FJT7T30011



**3"x24" Bullnose**  
FJT4TBY011



## Gris



**24"x48" R Biosafe**  
FJTR054021



**32"x32" R**  
FJTROAE021



**24"x24" R**  
FJTT660021



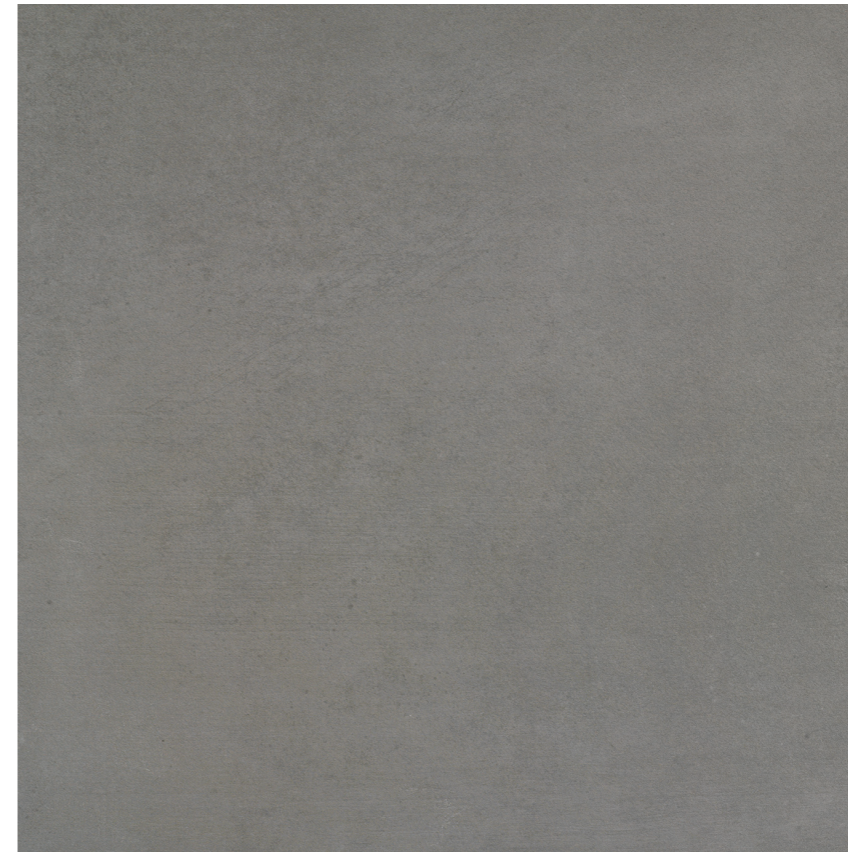
**12"x24" R**  
FJTT657021



**12"x12" Mosaic**  
FJT7T30021



**3"x24" Bullnose**  
FJT4TBY021



## Marengo



**24"x48" R Biosafe**  
FJTR054031



**32"x32" R**  
FJTROAE031



**24"x24" R**  
FJTT660031



**12"x24" R**  
FJTT657031



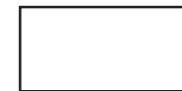
**12"x12" Mosaic**  
FJT7T30031



**3"x24" Bullnose**  
FJT4TBY031



## Antracita



**24"x48" R Biosafe**  
FJTR054311



**32"x32" R**  
FJTT6AE311



**24"x24" R**  
FJTT660311



**12"x24" R**  
FJTT657311



**12"x12" Mosaic**  
FJT7T30311



**3"x24" Bullnose**  
FJT4TBY311





# Downtown

## Biosafe Tile

Our new Downtown Biosafe is an innovative tile finish with highly antibacterial properties.

The active substances (composed of silver ions) incorporated into the enamel of the Downtown series are capable of inhibiting the growth of bacteria. This new development increases the degree of safety and confidence in the ceramic material and is suitable for rooms that require extra hygiene.

These antimicrobial properties have been verified by the AINIA technology center by means of a test based on the ISO 22196 standard, which determines the antibacterial capacity of non-porous surfaces.

Downtown Biosafe Gris 24"x48" R



# Downtown

## Color Body Porcelain

### Technical Specifications

CHARACTERISTICS	STANDARD	DECLARED ASTM
Water Absorption	C373	<=0.1%
Break Strength	C648	Min. 450
Scratch Hardness	MOH's Scale	7
Chemical Resistance	C650	Unaffected
Frost Resistance	C1026	Resistant
Group	SEE FAQs	4
Deep Abrasion - Unglazed Tiles	C1243	Pass
PEI - Glazed Tiles***	C1027	-
Minimum Bond Strength (PSI)	C482	165
Dynamic Coefficient of Friction (DCOF)	A137.1	>=0.42
Shade and Texture Rating	CTDA "V"	V3
Facial Dimensions	C499	Pass
Range of Thickness	C499	Pass
Warping	C485	Pass
Wedging	C502	Pass

### Packaging Info

Size	SF per carton	PC per carton
24"x48"	15.50	2
32"x32"	13.78	2
24"x24"	15.50	4
12"x24"	13.56	7
12"x12" Mosaic	5.81	6
3"x24" Bullnose	5.17	10