



**Roca**

**Carve**



# Carve

Add texture and character to your spaces with our Carve series, presenting a soft carved finish on top of a steel color that will remind you of a piece of art.

Carve Steel 12"x24" R

Glazed Porcelain

12"x24" R





Carve Steel 12"x24" R



Carve Steel 12"x24" R

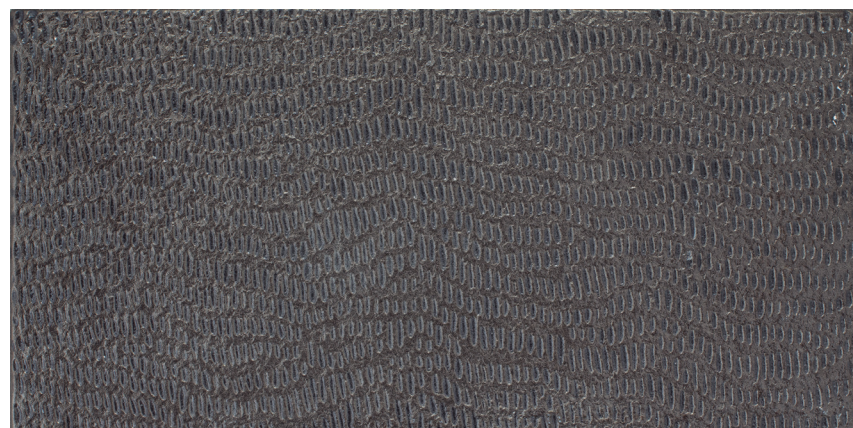


# Carve

## Glazed Porcelain



12"x24" R  
30x60 cm



## Steel



12"x24" R  
FPM0157021

### Technical Specifications (Floor)

CHARACTERISTICS	STANDARD	DECLARED ASTM
Water Absorption	C373	<=0.5%
Break Strength	C648	Min. 335
Scratch Hardness	MOH's Scale	4
Chemical Resistance	C650	Unaffected
Frost Resistance	C1026	Resistant
Group	See FAQ's	3
Deep Abrasion - Unglazed Tiles	C1243	Pass
PEI - Glazed Tiles	C1027	3
Minimum Bond Strength (PSI)	C482	165
Dynamic Coefficient of Friction (DCOF)	A137.1	<0.42
Shade and Texture Rating	CTDA "V"	V3
Facial Dimensions	C499	Pass
Range of Thickness	C499	Pass
Warpage	C485	Pass
Wedging	C502	Pass

## Packaging Info

Size	SF per carton	PC per carton
12"x24"R	19.38	10