

INTRODUCING PAVERS COLLECTION

**2CM COLOR BODY
AND DOUBLE LOAD PORCELAIN**

The Roca logo is displayed in white on a black rectangular background. It features the word "Roca" in a bold, sans-serif typeface. Below the text is a stylized, white, wavy horizontal line that serves as a graphic element.

ADVANTAGES OF 2CM PAVERS

1 [WHY USE PAVERS?](#)

2 [WHERE TO USE PAVERS?](#)

APPLICATION SYSTEMS

5 [• DRY APPLICATION ON GRASS](#)

6 [• DRY APPLICATION ON PEBBLE](#)

7 [• DRY APPLICATION ON SAND](#)

9 [• APPLICATION ON RAISED GROUND](#)

12 [• APPLICATION WITH MORTAR](#)

PRODUCTS

13 [ASPEN](#)

13 [PIAMONTE](#)

13 [MONTONE](#)

14 [CORTONA](#)

14 [TOSCANA](#)

15 [TECHNICAL DETAILS](#)

WHY USE PAVERS?



RESISTANT TO HIGH WEIGHT

The product has full resistance at high traffic areas.
(The product resists over 1,300 kg /cm².)



RESISTANT TO COMBUSTION

The product demonstrates no expansion and discoloration.



RESISTANT TO FREEZEING

Deformations due to freezing and mass losses are not encountered.



NOT EFFECTED FROM WEATHER CONDITIONS

The product is resistant to temperature differences in nature.



EASY CLEANING

The product is easily cleaned by water and washable by pressure water.

NaCl



RESISTANT TO SALT

The product is resistant to salt, acids and alkalis.



ANTISLIP SURFACE

The product can be produced antislip depending to request. (R10 , R11 , R12)



QUICK AND EASY APPLICATION

Places are ready for use immediately subsequent to application.



REUSABLE

The product is demountable, renewable and reusable.



SOUND AND HEAT INSULATION

The product contributes to sound and heat insulation.



MOLD AND DEEP RESISTANT

The product is resistant to formation of mold and moss.



LONG LASTING

The product has high abrasion resistance and is not subject to change over time.



RESISTANT TO CHEMICALS

The product is not affected by chemicals.



WHERE TO USE PAVERS?



TERRACES, VERANDAS, BALCONIES

The product can be used at places, exposed to external factors constantly.



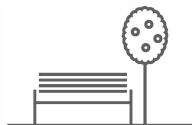
PARKING LOTS, GARAGES, GARAGE ROADS

The product is the right choice in terms of strength and reliability thanks to its load resistance above the average.



SWIMMING POOLS, FOUNTAINS

The product is suitable for usage in wet areas thanks to its antislip feature.



PARKS, GARDENS, RECREATION AREAS

The product's application is fast and practical to green areas as much as recreational areas.



FACTORIES, AIRPORTS, STATIONS

The product can be used safely in commercial and public areas where high durability is required for high pedestrian traffic.



HOLIDAY CENTERS, BEACHES, COASTS

The product is suitable for all soft surfaces. The product can be applied easily to sandy and stony beaches by dry application technique



Aspen Beige 60 x. 60 cm

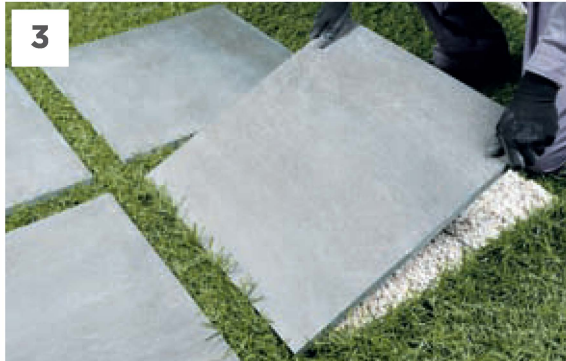
The Pavers series demonstrates extraordinary performance under hardest conditions thanks to its high fracture strength. Color body, which is a series consisting of glazed porcelain tile group of products, can be utilized safely in interior and exterior places.



Vista Grey 60 x 60 cm

DRY APPLICATION ON GRASS

Pedestrian paths in green spaces can be formed easily and quickly thanks to Pavers. The product is practical, economic and environmentally friendly inasmuch as adhesive, joint and laying work is not required during the dry application thereof.



1

PREPARATION

The tile pattern to be applied on grass is decided. The area is excavated through virtue of a shovel according to the size of tiles. The ground is made ready by digging at a depth of about 5-6 cm.

2

STABILIZER LAYER

Pebbles are fixed in order to adjust height by pouring them into the pit with the help of gauge. Preparation of at least a 3 cm-thickness pebble layer is recommended below the application area.

3

APPLYING TILES

Tiles are applied approximately 1 cm under the grass level.

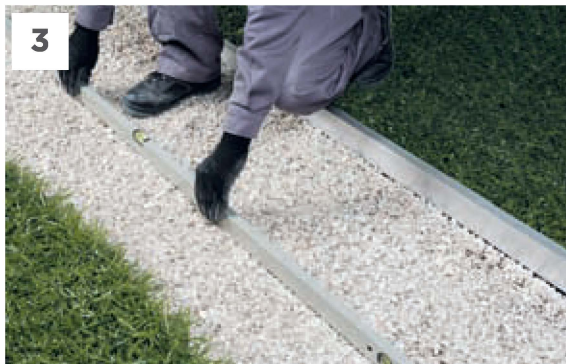
4

LEVEL ADJUSTMENT

Rubber mallet is utilized in order to align the lawns with the tiles.

DRY APPLICATION ON PEBBLE

Pavers is a practical and a versatile solution in both residential and public areas. The application on pebbles ensures drainage of rainwater in a correct way.



1

PREPARING THE AREA

A pebble mixture which has different particle sizes (16-35 mm) is poured into the application area. A pebble layer in 10-20 cm thickness is formed.

2

SURFACE LEVELING

Minimum of 2% slope in the flow direction of water should be given to the application area.

3

PLACING TILES

The pebble layer is leveled by virtue of a floating rule. Standard gaps are provided when tiles are applied and surface flatness is checked every 5 meters for ideal application.

4

FINISHING

The gaps between the tiles are filled by fine sand or pebble and the tiles are fully placed on the ground by virtue of a rubber mallet.

DRY APPLICATION ON SAND

Pedestrian paths or seating areas are formed on the beaches and coasts by Pavers. It is recommended using tiles in light colors in order to prevent overheating of the surface in applications made on sand.



-
- | | |
|----------|--|
| 1 | PREPARATION
There should be at least 5-10 cm thickness sand layer in the application area. |
|----------|--|
-
- | | |
|----------|--|
| 2 | STABILIZER LAYER
The surface is leveled by virtue of a floating rule before the tiles are applied. |
|----------|--|
-
- | | |
|----------|--|
| 3 | PLACING TILES
Application is made subsequent to determination of appropriate gaps between the tiles. |
|----------|--|
-
- | | |
|----------|--|
| 4 | FINISHING
The gaps between the tiles can be filled again by sand or used without the application of filling. |
|----------|--|
-



Aspen Beige 60 x 60 cm

APPLICATION OF RAISED GROUND

Pavers provides numerous advantages when applied with ground elevating apparatus to be placed at the corners and center. Ground roughness and collapse issues are solved in a practical way thanks to this application method.



1

PREPARATION OF THE AREA

Tiles are applied on concrete screed or on ceramic floor without leveling through utilization of suitable height apparatus.

2

CONTROL OF TILES

20 mm tiles are manufactured in arectified and their size tolerances are ± 0.5 mm.

3

APPLICATION

It is recommended for high traffic areas to place an apparatus in the middle part of the tile in addition to the apparatus placed on the tile corners. Installations (water, electricity, lighting, etc.) can be easily placed thanks to ground elevating apparatus.

4

LEVEL

Adjustable tools ensure laying evenly in cases when the ground is not smooth. The tiles can be easily changed in the event of a failure subsequent to completion of the application.



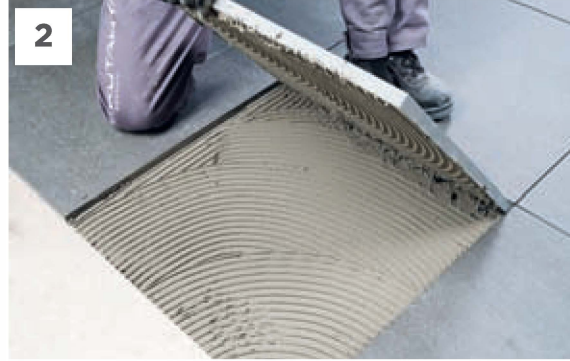
Cortona Gris 60 x 60 cm



Toscana Arena 60 x 60 cm

APPLICATION WITH MORTAR

Pavers is applied by usual technique in high traffic areas. Thanks to its durable structure, it is the perfect solution for public areas and industrial facilities.



1

PREPARATION OF ADHESIVE MORTAR

Adhesive mortar is made ready prior to placing the tiles. Cement based, high performance and super flexible bonding mortars have to be utilized.

2

APPLICATION OF ADHESIVE MORTAR TO THE GROUND

Application should be made by applying the adhesive on both to the surface and back of the tile. It should be let to dry for at least 24 hours after apply the adhesive mortar and then the joint application should be proceeded.

3

JOINT APPLICATION

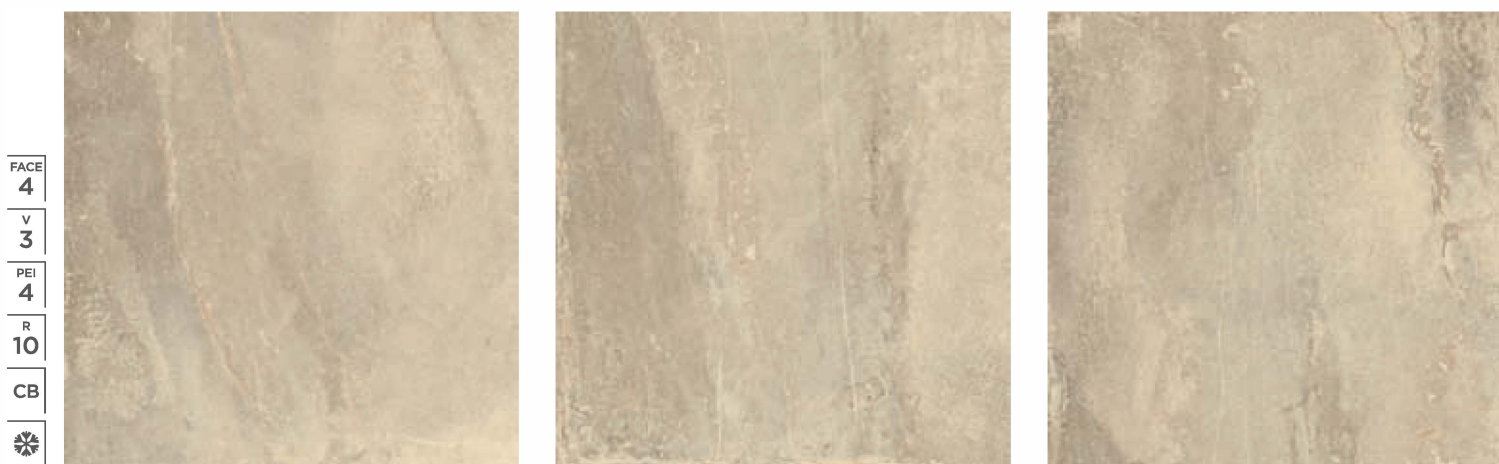
It is recommended to leave a joint gap of at least 5 mm. the joint gap must be at least 1 cm in soft grounds. Usage of KYK Megafuge Flex joint is recommended in high traffic areas.

4

THE LAST STEP

The joints must be removed before it dries. Recommended chemichals for cleaning should be utilized and the surface should be rinsed by plenty of water.

ASPEN



FACE
4
V
3
PEI
4
R
10
CB
✱

F55014248R1
Aspen Beige 20 mm R10 Rectified 60 x 60 cm

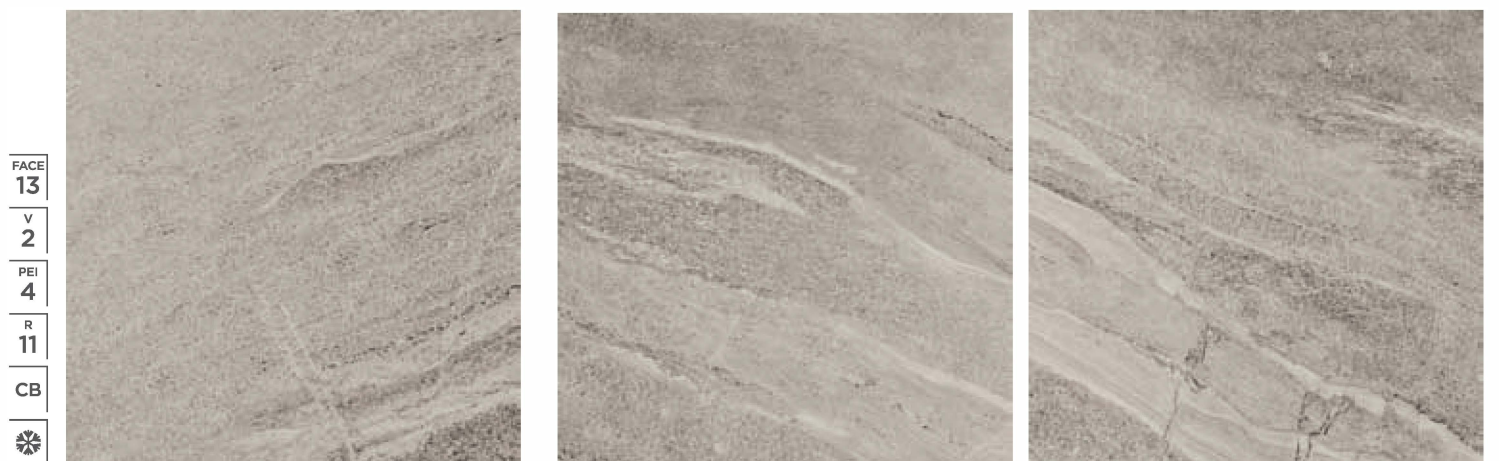
PIAMONTE



FACE
6
V
2
PEI
3
R
11
CB
✱

FR4E060021
Piamonete Gris 20 mm R11 Rectified CB 60 x 60 cm

MONTONE



FACE
13
V
2
PEI
4
R
11
CB
✱

FR9E060021
Montone Gris 20 mm R11 Rectified CB 60 x 60 cm

CORTONA

FACE
8
V
2
PEI
2
R
11
CB
☼



FRBE060311
Cortona Antracita 20 mm R11 Rectified CB 60 x 60 cm

FACE
8
V
2
PEI
4
R
11
CB
☼



FRBE060021
Cortona Gris 20 mm R11 Rectified CB 60 x 60 cm

TOSCANA

FACE
8
V
3
PEI
4
R
11
CB
☼



FR5E060371
Toscana Arena 20 mm R11 Rectified CB 60 x 60 cm

TECHNICAL DETAILS

SYMBOLS



Glazed Porcelain



Color Body



Suitable for walls, bedroom and bathroom floors.



Suitable for light traffic environments like the floors of house.



Suitable for heavy traffic area like entrances.



Suitable for heavy traffic environments like restaurants, shopping stores.



Suitable for heavy traffic indoor and outdoor environments.



UNIFORM APPEARANCE

Differences among pieces from the same production run are minimal.



SLIGHT VARIATION

Clearly distinguishable differences in texture and/or pattern with similar colors.



MODERATE VARIATION

While the colors present on a single piece of tile will be indicative of the colors to be expected on the other tiles, the amount of colors on each piece will vary significantly.



SUBSTANTIAL VARIATION

Random color differences from tile to tile, so that one tile may have totally different colors from that on other tiles. Thus, the final installation will be unique.

R9	$\geq 6^{\circ} - 10^{\circ}$		R11	$\geq 19^{\circ} 27^{\circ}$	
R10	$\geq 10^{\circ} - 19^{\circ}$		R12	$\geq 27^{\circ} 35^{\circ}$	

Values mentioned are determined according to DIN 51130 ceramic tiles slip resistance (ramp) test.

PACKAGING		BOX		PALLET		Pallet Dimensions
Size	Body	Box Pieces	Box M'	Boxes in Pallet	Pallet M'	
60 x 60 cm/ 24 x 24"	Glazed Porcelain	2	0,72	30	21,6	80 X 120 X 75

Rectified

GLAZED PORCELAIN GROUP Bia (EKG)

NORMS	TECHNICAL CHARACTERISTICS		REQUIRED VALUES	GLAZED PRUDUCT DECLARED VALUES
EN ISO 10545-2	DIMENSIONS AND SURFACE QUALITY	LENGTH AND WIDTH	%+/- 0,6 (+/- 2,0 mm)	%+/- 0,40
		THICKNESS	%+/- 5 (+/-0,5 mm)	%+/- 5 (+/-0,5 mm)
		STRAIGHTNESS OF SIDES	%+/- 0,5 (+/- 1,5 mm)	%+/- 0,30
		RECTANGULARITY	%+/- 0,5 (+/- 2,0 mm)	%+/- 0,30
		CENTRE - EDGE CURVATURE-WARPAGE	%+/- 0,5 (+/- 2,0 mm)	%+ 0,20 / - 0,10
		SURFACE QUALITY	95%	95%
EN ISO 10545-3	WATER ABSORPTION %		≤0,10 Individual Max. 0,6%	≤0,10
EN ISO 10545-4	BREAKING STRENGTH (N)	A: THICKNESS 2 7,50 mm B: THICKNESS < 7,50 mm	A:MIN 1300 N B:MIN 700 N	A:MIN 10000 N
	MODULUS OF RUPTURE (N/ mm ²)		MIN: 35 N/ mm ²	MIN: 60 N/ mm ²
EN ISO 10545-5	IMPACT RESISTANCE AS, COEFFICIENT OF RESTITUTION (COR)		(DECLARED VALUE)	REQUIRED
EN ISO 10545-7	ABRASION RESISTANCE		ABRASION CLASS AND CYCLES PASSED	ABRASION CLASS AND CYCLES PASSED (2 - 5 CLASS)
EN ISO 10545-8	LINEAR THERMAL EXPANSION		DECLARED VALUE	6,00 x10 ⁻⁶ / 7,50 x10 ⁻⁶
EN ISO 10545-9	THERMAL SHOCK RESISTANCE		REQUIRED	REQUIRED
EN ISO 10545-10	MOISTURE EXPANSION		DECLARED VALUE	0,01%
EN ISO 10545-11	CRAZING RESISTANCE		REQUIRED	REQUIRED
EN ISO 10545-12	FROST RESISTANCE		REQUIRED	REQUIRED
EN ISO 10545-13	RESISTANCE TO LOW CONCENTRATIONS OF ACIDS AND ALKALIS		DECLARED VALUE	LA /LB (REQUIRED)
	RESISTANCE TO HIGH CONCENTRATIONS OF ACIDS AND ALKALIS		DECLARED VALUE	HA/HB (REQUIRED)
	RESISTANCE TO HAUSEHOLD CHEMICALS AND SWIMMING POOL SALTS		MIN:B	A/B (REQUIRED)
EN ISO 10545-14	RESISTANCE TO STAINING		MIN CLASS 3	MIN: 3 CLASS 3
EN ISO 10545-15	RELEASE OF DANDEROUS SUBSTANCES LEAD - CADMIUM		DECLARED VALUE	Pb:< 0,1 Cd:< 0,01
DIN 51130-51097 CEN/TS 16165	SLIPPERINESS		DECLARED VALUE	R.9 - R.10 - R.11 -R.12 SINIF / CLASS:A-B-C
EN 12004:2007+AI:2012,4,1	BOND STRENGTH / ADHESION	CEMENTITIOUS ADHESIVES	DECLARED VALUE	;a:0,5 Tip C2
EN 12004:2007+AI:2012,4,2		DISPERSION ADHESIVES	DECLARED VALUE	
EN 12004:2007+AI:2012,4,3		REACTION RESIN ADHESIVES	DECLARED VALUE	
	MORTAR		DECLARED VALUE	
-----	REACTION TO FIRE		AI or AI FL	AI or AI FL
CEN/TS15209	TACTILITY		DECLARE SURFACE DESCRIPTION	DECLARE SURFACE DESCRIPTION