



Roca

XL SLAB

Fire



Fire

Corten steel, developed in the 1930s for railroad construction due to its corrosion resistance, has since inspired the decor world with its rusted appearance, reddish hues, and industrial feel. The Fire Series perfectly captures these characteristics and weather reactions, lending a natural wear look to porcelain.

Matte Porcelain

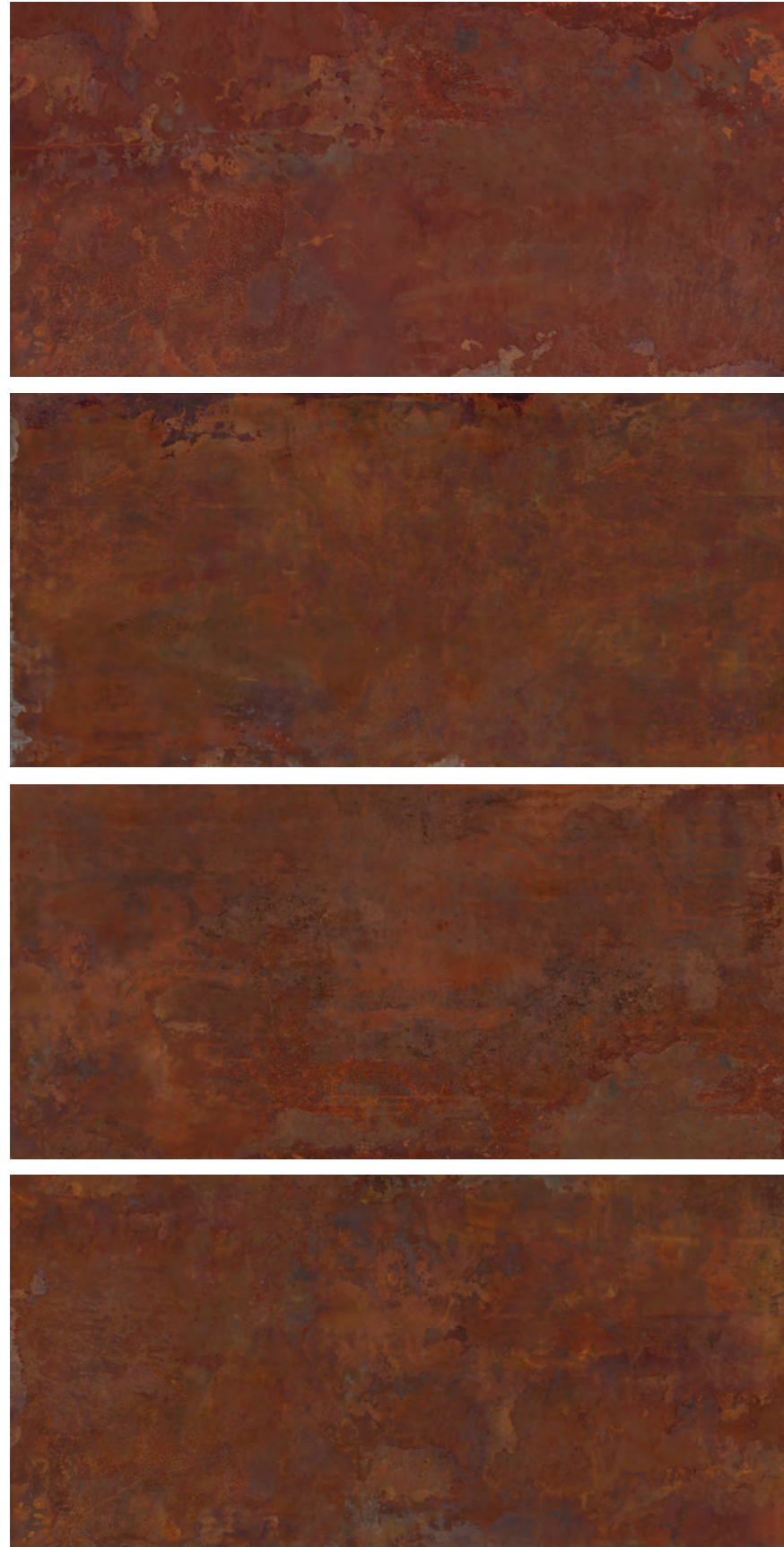
 | 48"x98" R

Fire

Matte Porcelain



48"x98" R
120x250 cm



48"x98" R

Fire

Matte Porcelain

Technical Specifications

| CHARACTERISTICS | STANDARD | DECLARED ASTM |
|--|--------------|---------------|
| Water Absorption | ISO-10545/3 | <=0.5% |
| Break Strength | ISO-10545/4 | Min. 200 N |
| Chemical Resistance | C650 | Unaffected |
| Stain Resistance | ISO-10545/14 | 5 |
| Frost Resistance | C1026 | Resistant |
| Thermal Shock Resistance | ISO-10545/9 | Resistant |
| Crazing Resistance | ISO-10545/11 | Resistant |
| Group | See FAQ's | 4 |
| PEI- Glazed Tiles | C1027 | PEI (V) |
| Dynamic Coefficient of Friction (DCOF) | A326.3 | <0.40 |
| Shade and Texture Rating | CTDA | V3 |
| Facial Dimensions | C499 | Pass |
| Range of Thickness | C499 | Pass |
| Warpage | C485 | Pass |
| Wedging | C502 | Pass |

Packaging Info

| Size | SF per carton | PC per carton | BX per pallet |
|-----------|---------------|---------------|---------------|
| 48"x98" R | 32.16 | 1 | 40 |