



Roca

LUX

Lux

Crafted from glass, this collection delivers a clean, solid-color look with a luminous finish. Each shade brings clarity and vibrancy to modern spaces. Sleek, sustainable, and effortlessly versatile, this collection adds depth and light while supporting environmentally conscious design.



Lux Crystal 3"x12"

Glass Wall Mosaic

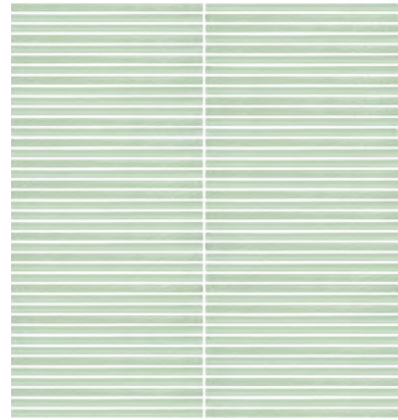
📏 **B** 📏 | 12"x12" - 3"x12"



Lux

Glass Wall Mosaic

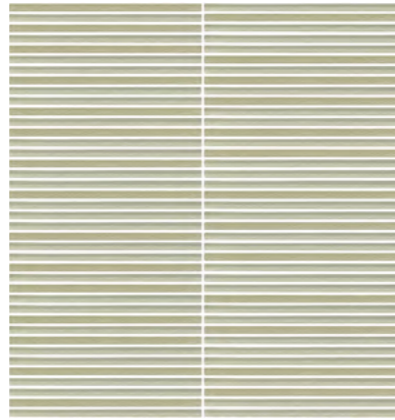
6 mm |  |  | 12"x12"
30x30 cm



Opal



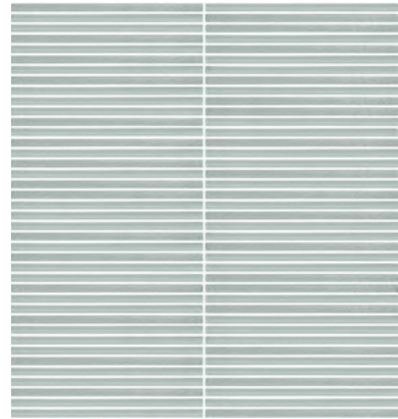
12"x12" Fluted Mosaic



Sand



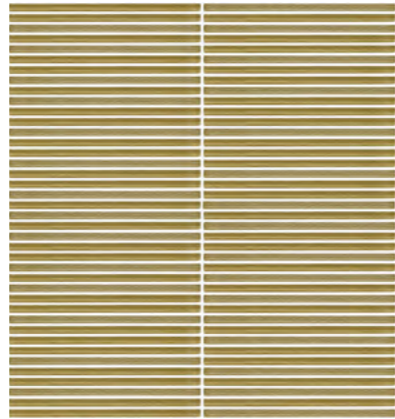
12"x12" Fluted Mosaic



Smoke



12"x12" Fluted Mosaic



Bronze

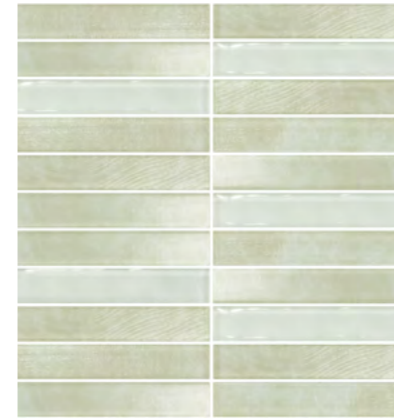


12"x12" Fluted Mosaic

Lux

Glass Wall Mosaic

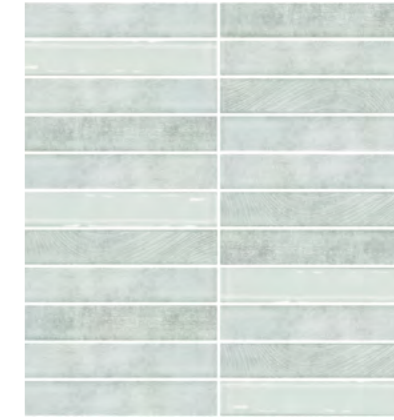
6 mm |  |  | 12"x12"
30x30 cm



Dune



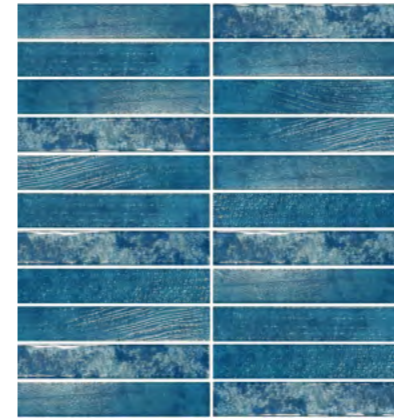
12"x12" Stacked Mosaic



Harbor



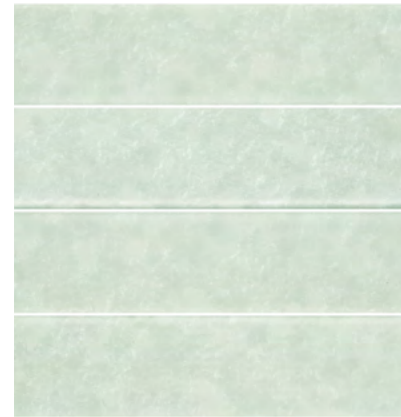
12"x12" Stacked Mosaic



Sapphire



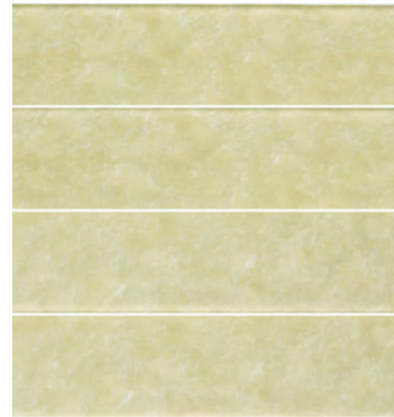
12"x12" Stacked Mosaic



Crystal



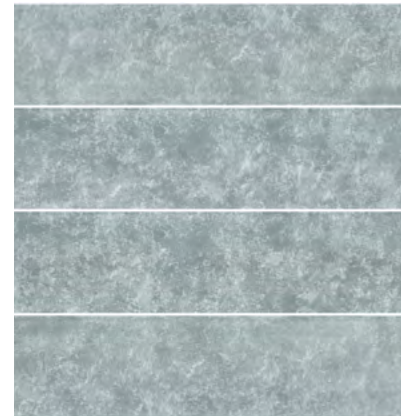
3"x12"



Champagne



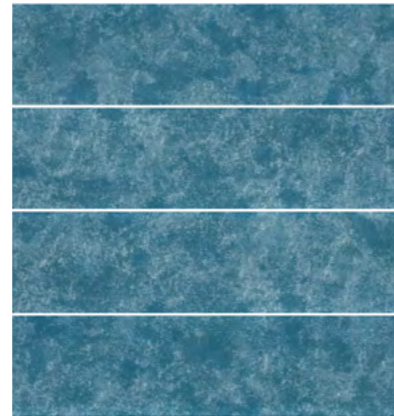
3"x12"



Pewter



3"x12"



Indigo



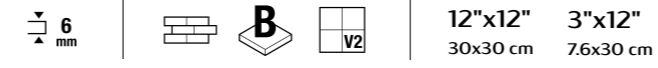
3"x12"



Emerald



3"x12"



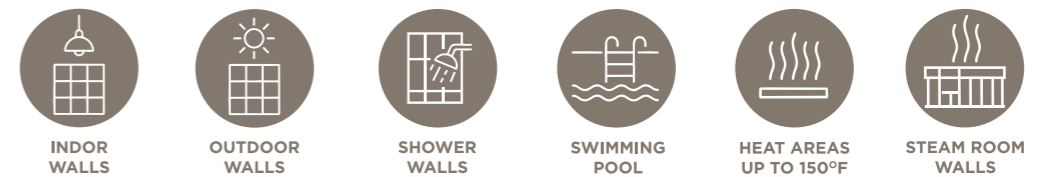
Technical Specifications

| CHARACTERISTICS | STANDARD | DECLARED ASTM |
|--|-------------|----------------|
| Water Absorption | ISO-10545/3 | 0% |
| Break Strength | C648 | ≥250 lbf |
| Chemical Resistance | C650 | Unaffected |
| Scratch Hardness | MOHS | 5 |
| Frost Resistance | C1026 | Unaffected |
| Thermal Shock Resistance | ISO-10545/9 | Resistant |
| Group | See FAQ's | 1 |
| PEI- Glazed Tiles | C1027 | Not Applicable |
| Dynamic Coefficient of Friction (DCOF) | A137.1 | Not Applicable |
| Shade and Texture Rating | CTDA | V2 |
| Facial Dimensions | C499 | Pass |
| Range of Thickness | C499 | Pass |
| Warpage | C485 | Pass |
| Wedging | C502 | Pass |

Packaging Info

| Size | SF per carton | PC per carton | BX per pallet |
|-----------------|---------------|---------------|---------------|
| Fluted 12"x12" | 0.99 | 11 | 72 |
| Stacked 12"x12" | 0.99 | 11 | 81 |
| 3"x12" | 0.92 | 40 | 81 |

Recommended Applications



Glazed Mosaics

Installation Guidelines for Mesh-Mounted Glass Mosaic



Field Tiles

Installation Guidelines for Field Tiles



1. INSPECTION AND PREPARATION:

Inspect all mosaic boxes for consistent colors and batch numbers. Ensure the installation surface is clean, dry, level, and square.



5. LEVELING AND SETTING:

Use a rubber float or the flat side of a trowel to tap the surface. This levels the mosaic tiles and sets them firmly into the adhesive. Wait at least 24 hours to ensure the cement base has dried completely.



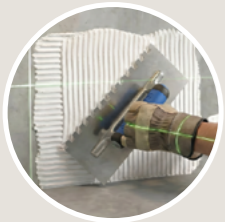
2. LAYOUT PLANNING:

Mark layout grid lines on the surface to ensure the mosaic tiles are straight and align correctly.



6. GROUTING:

Apply grout using a rubber float, pressing it firmly into all joints until they are completely filled.



3. ADHESIVE APPLICATION:

Use the flat side of a trowel to spread a white cement-based adhesive over the surface. Then, use a 3 mm notched trowel held at a 45-degree angle to create a uniform adhesive bed.



7. INITIAL CLEANING:

Once the grout has slightly set, wipe off excess with a damp sponge. Clean and smooth the joints, then repeat with a clean sponge several times.



4. LAYING THE MOSAICS:

Place the mosaic sheets following your layout lines, starting from one side. Ensure that the joints between sheets are equal to the joints between individual tiles to prevent gaps.



8. FINAL FINISHING:

Before the grout dries completely, remove any remaining film with a clean, dry cloth to polish the surface.



1. INSPECTION AND PREPARATION:

Inspect all tile boxes to ensure consistent color shades and batch numbers. Ensure the installation surface is clean, dry, level, and properly prepared.



5. LEVELING AND SETTING:

Press tiles gently by hand or with a rubber float to ensure an even surface. Allow 24 hours to cure before grouting.



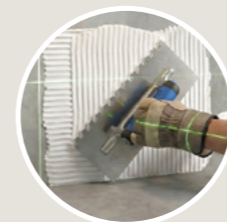
2. LAYOUT PLANNING:

Mark layout grid lines on the surface to ensure proper alignment. Determine the installation pattern in advance, such as stack (straight lay), brick bond (1/2 offset), or 1/3 offset, and dry lay tiles if necessary to confirm the layout.



6. GROUTING:

Apply grout using a rubber float, pressing it firmly into all joints until they are completely filled.



3. ADHESIVE APPLICATION:

Use the flat side of a trowel to spread a white cement-based adhesive over the surface. Then, use a 4 mm notched trowel held at a 45-degree angle to create a uniform adhesive bed.



7. INITIAL CLEANING:

Once the grout has slightly set, wipe off excess with a damp sponge. Clean and smooth the joints, then repeat with a clean sponge several times.



4. TILE INSTALLATION

Install tiles individually using spacers to maintain consistent grout lines. For cutting, refer to the "Field Tiles" cutting section.



8. FINAL FINISHING:

Before the grout dries completely, remove any remaining film with a clean, dry cloth to polish the surface.

How to cut "Glass Mosaic"

- **Score the surface:** Use a carbide glass scoring tool to score along your marked line on the flat surface of the mosaic.
- **Break the glass:** Use a pair of glass nippers to carefully break the glass away along the scored line.
- **Smooth the edges:** Grind any sharp edges using a 4-inch grinder (specifically one designed for glass or mirrors).

Maintenance

- Clean surface with a soft, damp sponge using water, glass cleaner, or a pH-neutral solution.
- Avoid acids, alkalis, and abrasives to prevent damage.

Suggestions

- Ensure all packages have matching shade and batch numbers before installation.
- Use white adhesive for optimal appearance and bonding.
- Ensure a surface-specific adhesive is used for wood, acrylic, gypsum, or metal.
- For pool installations, wait at least 20 days after cleaning before filling with water.

Cautions

- Always use eye protection and gloves when cutting or grinding glass.
- Only use drill bits specifically designed for glass.
- Keep the product in their original packaging until use to prevent scratches and moisture damage to the backing.
- Store in a dry area to ensure the mosaic pieces stay securely attached to the mesh.

How to cut "Field Tiles"

- **Score the surface:** Use a carbide glass scoring tool to score along your marked line on the flat surface of the tile.
- **Break the glass:** Use a pair of glass nippers to carefully break the glass away along the scored line.
- **Smooth the edges:** Grind any sharp edges using a 4-inch grinder (specifically one designed for glass or mirrors).

Maintenance

- Clean surface with a soft, damp sponge using water, glass cleaner, or a pH-neutral solution.
- Avoid acids, alkalis, and abrasives to prevent damage.

Suggestions

- Ensure all packages have matching shade and batch numbers before installation.
- Use white adhesive for optimal appearance and bonding.
- Ensure a surface-specific adhesive is used for wood, acrylic, gypsum, or metal.

Cautions

- Always use eye protection and gloves when cutting or grinding glass.
- Only use drill bits specifically designed for glass.
- Keep the product in their original packaging until use to prevent scratches and moisture damage to the backing.