



Roca

Casablanca



Casablanca

Interiors that look to the past to reinvent the present by using classic geometric shapes and patterns. Casablanca pays tribute to encaustic tiles while adding a modern twist.

Casablanca Gray 8"x9" Hexagon

Gres Stoneware

8"x8" 8"x9"



Casablanca Fond 8"x8"



Casablanca Trails 8"x8"

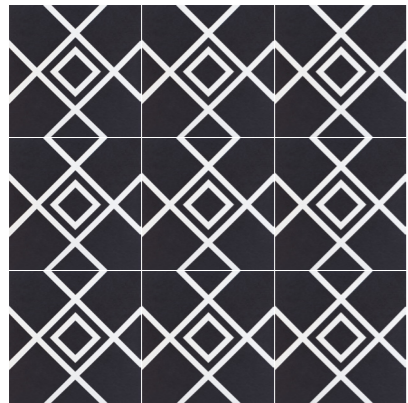


Casablanca Terrazzo Fun White 8"x8"

Casablanca

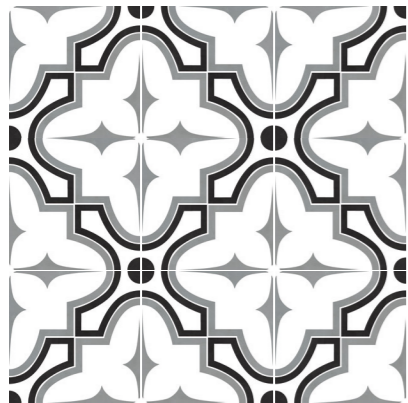
Gres Stoneware

8.2 |  | 8"x8"
20x20 cm



Squares

8"x8"



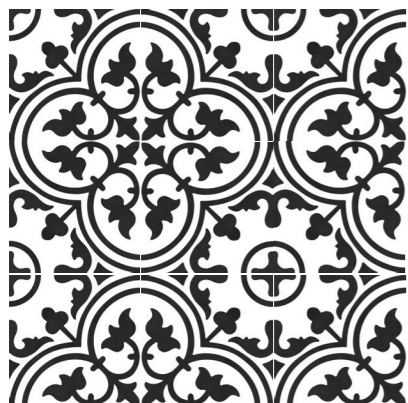
Market

8"x8"



Trails

8"x8"



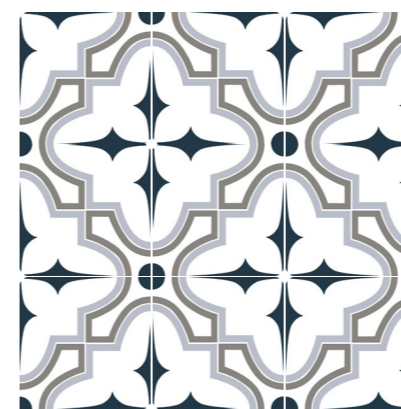
Heritage

8"x8"



Heritage Blue

8"x8"



Market Blue

8"x8"

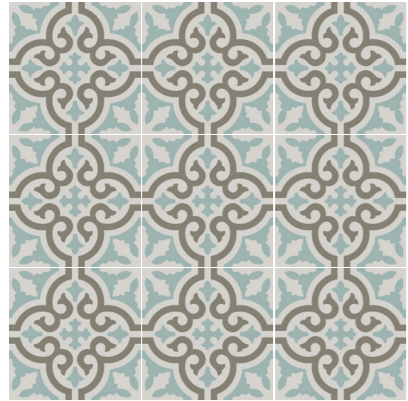


Casablanca Breeze 8"x8"

Casablanca

Gres Stoneware

82 |  **8"x8"**
20x20cm



Aqua

8"x8"



Fond

8"x8"



Casablanca Market Blue 8"x8"

Casablanca

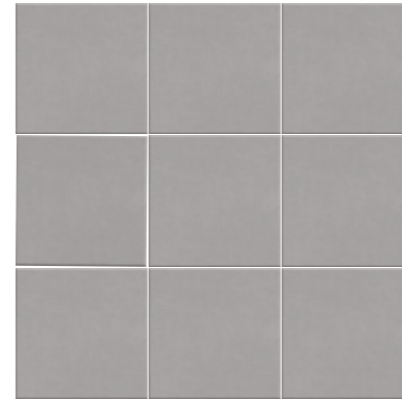
Gres Stoneware

82 |  **8"x8"**
20x20cm



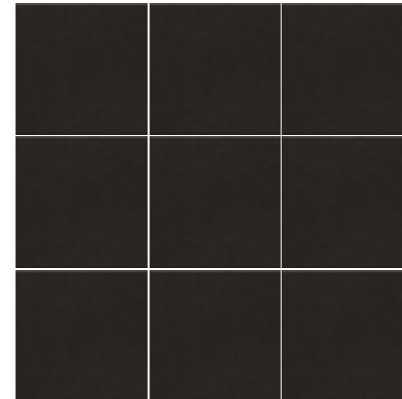
Solid White

8"x8"



Solid Gray

8"x8"



Solid Black

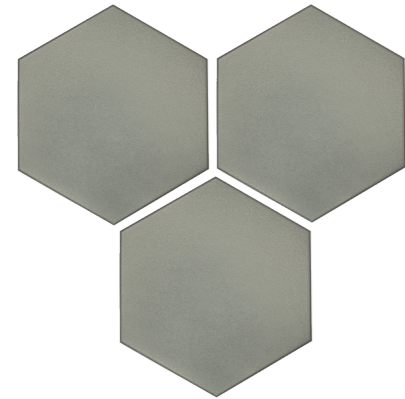
8"x8"


8"x9"
 20x23cm



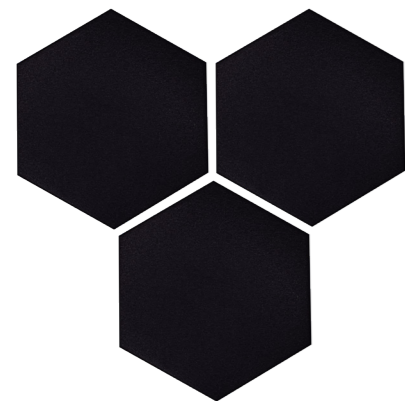
Solid White


 8"x9"



Solid Gray


 8"x9"



Solid Black


 8"x9"

Technical Specifications

CHARACTERISTICS	STANDARD	DECLARED ASTM
Water Absorption	C373	<3%
Break Strength	C648	Min. 350
Scratch Hardness	MOH's Scale	5
Chemical Resistance	C650	Unaffected
Frost Resistance	C1026	Resistant
Group	See FAQ's	3
Deep Abrasion - Unglazed Tiles	C1243	Pass
PEI - Glazed Tiles	C1027	2-4*
Minimum Bond Strength (PSI)	C482	165
Dynamic Coefficient of Friction (DCOF)	A137.1	>=0.42
Shade and Texture Rating	CTDA "V"	VI
Facial Dimensions	C499	Pass
Range of Thickness	C499	Pass
Warpage	C485	Pass
Wedging	C502	Pass

*PEI is 2 for Casablanca Solid Black, Spice, Squares and Trails
*PEI is 4 for Casablanca Aqua, Heritage, Market, Breeze, Solid White, Solid Gray and Terrazzos

Packaging Info

Size	SF per carton	PC per carton	BX per pallet
8"x8"	14.45	34	45
8"x9"	12.16	33	45